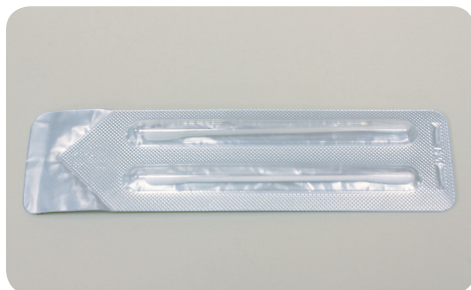


Fiber is very sensitive to dirt and debris. This can cause incorrect performance of your cable and increased insertion loss which may cause the system not to operate. It is extremely important to regularly inspect your fiber contacts. This guide will help you understand how to evaluate and clean the fiber contacts in the field to provide excellent performance of your cable.

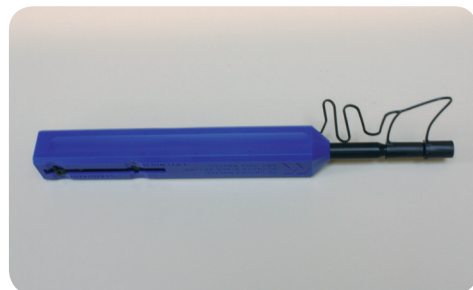
RECOMMENDED TOOLS



LEM.WST.KI.125.34 – Fiber optic cleaning kit. Comprised of 2 cotton buds, 1 dry and 1 soaked in IPA (Isopropyl Alcohol)



SBP.CLN.CTNSWB – 6" General purpose sterile cotton swab – Taper mini cotton tip with wooden handle



SBP.CLN.CLK.LEMO - quick cleaner for LEMO 2.0mm connectors



LEM.DCS.F2.035.PN – LEMO Dual ended tool for Plug-end alignment sleeve removal



SBP.CLN.IPA – Isopropyl Alcohol 8 fl oz. flip-top bottle



LTL.CI-1100-AB2 – Portable Fiber Optic Inspection Scope

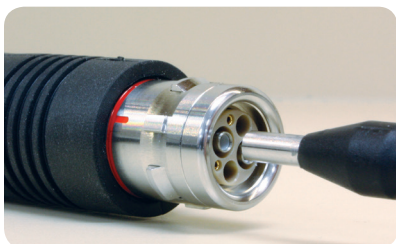
CALL TOLL FREE: 866.SHATTUC | MAIN: 847.360.9500 | FAX: 847.360.9599 | info@shattuc.com | www.shattuc.com

Shattuc Cord Specialties, Inc., manufactures a large variety of electrical and non-electrical cords for a wide range of industries. In addition, Shattuc distributes products for the PRO A/V and Broadcasting industries.

Now accepting:



REMOVE ALIGNMENT SLEEVE IN PLUG



Step 1 – Insert Alignment Sleeve Removal Tool LEM. DCS.F2.035.PN and twist clockwise.



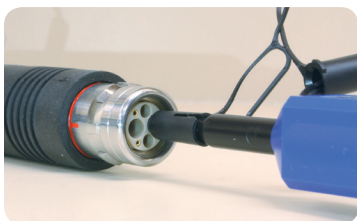
Step 2 – Pull to remove Alignment Sleeve. Repeat for other sleeve.

CLEANING FIBER CONTACT FOR PLUG AND SOCKET



Step 1 – Inspect Fiber Contact with Inspection Scope. If minimal dirt/debris, start at Step 2. If extremely dirty, start at Step 3.

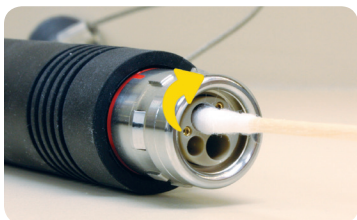
See page 3 for more info.



Step 2 – Clean contact with SBP.CLN.CLK.LEMO Cleaner



Step 3 – Open LEM.WST.KI.125.34 cotton swab kit.



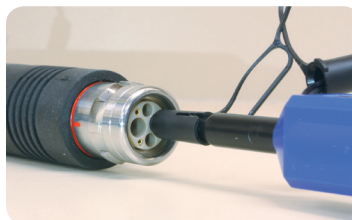
Step 4 – Place the cotton swab soaked in IPA on the contact and rotate clockwise 3-4 times. (Or SBP.CLN.CTNSWB swab with SBP.CLN.IPA)



Step 5 – Place the dry cotton swab on the contact and rotate counterclockwise 3-4 times. (Or dry SBP.CLN.CTNSWB swab)



Step 6 – Place a new dry SBP.CLN.CTNSWB cotton swab on contact and rotate clockwise 3-4 times. (Repeat step, rotating counter-clockwise)



Step 7 – Clean contact with SBP.CLN.CLK.LEMO Cleaner



Step 8 – Inspect Fiber Contact with Inspection Scope. See page 3 for more info. If dirty, repeat from step 2.



Be sure to clean all your mating connections as well, not just the cable. This includes patch panels, junction boxes, cameras, etc. Any dirt on a contact can easily transfer and contaminate a clean contact.

CALL TOLL FREE: 866.SHATTUC | MAIN: 847.360.9500 | FAX: 847.360.9599 | info@shattuc.com | www.shattuc.com

Shattuc Cord Specialties, Inc., manufactures a large variety of electrical and non-electrical cords for a wide range of industries. In addition, Shattuc distributes products for the PRO A/V and Broadcasting industries.

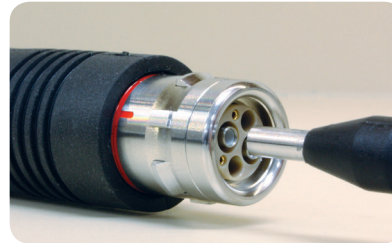
Now accepting:



INSERT ALIGNMENT SLEEVE IN PLUG

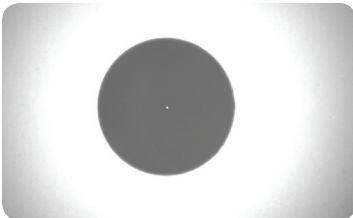


Step 1 – Snap Alignment Sleeve back into plug, twist counter-clockwise to remove tool.

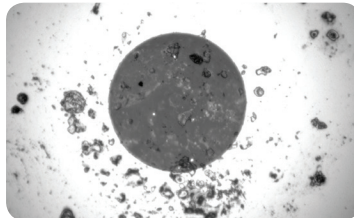
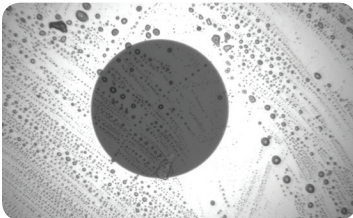


Step 2 – Check that alignment sleeves are placed properly.

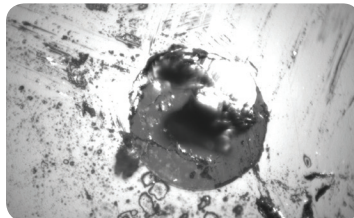
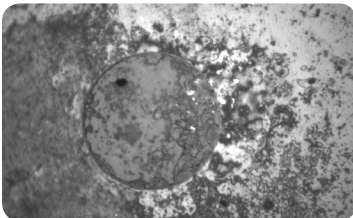
HOW TO READ YOUR SCOPE



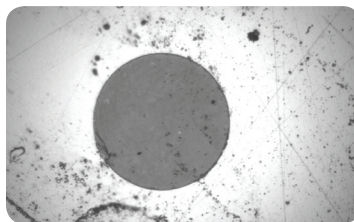
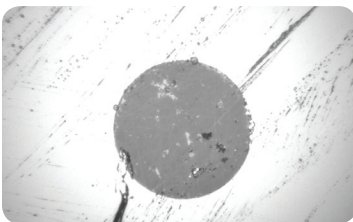
This is a clean fiber contact. Note the small white dot in the center, this is your fiber. It is important to make sure this is not covered or damaged. (You may or may not see the white dot depending on your fiber and length of cable)



These fiber contacts would be considered minimally dirty. You can start on Step 2 of the cleaning instructions.



These fiber contacts would be considered extremely dirty. You would want to start on Step 3 of the cleaning instructions. If you are not sure if it is extremely dirty or minimally dirty, you can always start at step 3.



These fiber contacts are chipped or scratched fiber contacts. You can attempt to clean to see if it improves, but these may need to be re-polished or possibly replaced in shop. Our lab evaluates and repairs cables like these.

CALL TOLL FREE: 866.SHATTUC | MAIN: 847.360.9500 | FAX: 847.360.9599 | info@shattuc.com | www.shattuc.com

Shattuc Cord Specialties, Inc., manufactures a large variety of electrical and non-electrical cords for a wide range of industries. In addition, Shattuc distributes products for the PRO A/V and Broadcasting industries.

Now accepting:



FIBER CLEANING KITS



Shattuc offers cleaning kits to get you started with all the tools and supplies you might need. Our Lemo F2 Kit includes all the materials mentioned in these cleaning instructions, minus the inspection scope which is available separately. See below for our kit options.

SBP.CLN.KIT-LEMO just for Lemo SMPTE includes:

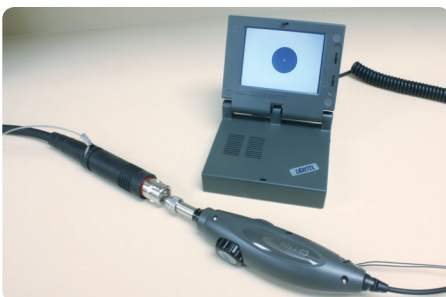
- (20) LEM.WST.KI.125.34 – cotton swab kit (1 dry, 1 IPA)
- (20) SBP.CLN.CTNSWB – 5 dry cotton swab bag
- (1) SBP.CLN.CLK.LEMO – Quick cleaner for Lemo 2.0mm
- (1) LEM.DCS.F2.035.PN – Lemo Alignment Removal Tool
- (1) SBP.CLN.IPA – 8fl oz. Isopropyl Alcohol bottle



SBP.CLN.KIT-UNIV universal cleaning kit for LC, ST, SC, FC, Lemo F2 (UPC & APC) kit includes:

- (20) LEM.WST.KI.125.34 – cotton swab kit (1 dry, 1 IPA)
- (20) SBP.25-826 5WC – 5 dry cotton swab bag
- (1) SBP.CLN.CLK.LEMO – Quick cleaner for Lemo 2.0mm
- (1) SBP.CLN.CLK.LC – Quick Cleaner for LC 1.25mm
- (1) SBP.CLN.CLK.SC – Quick cleaner for SC, ST, FC (UPC and APC) 2.5mm
- (1) LEM.DCS.F2.035.PN – Lemo Dual End Alignment Removal Tool
- (1) SBP.CLN.WIPES – Lint free wipes
- (1) SBP.CLN.IPA – 8fl oz. Isopropyl Alcohol bottle

FIBER OPTIC INSPECTION SCOPE



Shattuc offers Inspection Scopes in addition to the cleaning

- Kits for your fiber inspection. Order yours today!
- LTL.CI-1100-A2 - Inspection Scope with LCD monitor
- LTL.CI-1100-AB2 – Inspection Scope with USB connection
- LTL.PT2-U2.0/PC/M – Lemo F2 tip for scope

CALL TOLL FREE: 866.SHATTUC | MAIN: 847.360.9500 | FAX: 847.360.9599 | info@shattuc.com | www.shattuc.com

Shattuc Cord Specialties, Inc., manufactures a large variety of electrical and non-electrical cords for a wide range of industries. In addition, Shattuc distributes products for the PRO A/V and Broadcasting industries.

Now accepting:

